

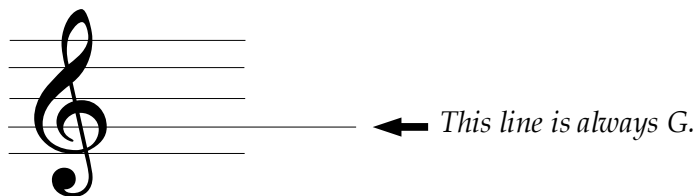
Lesson Five The treble clef - C position

The Treble Clef

A **clef** is a symbol that lets us know which notes are represented by the lines and spaces on the staff.

The **treble clef** shows us the notes above middle C. For now, the treble clef will show us notes that we will play with our *right hand*.

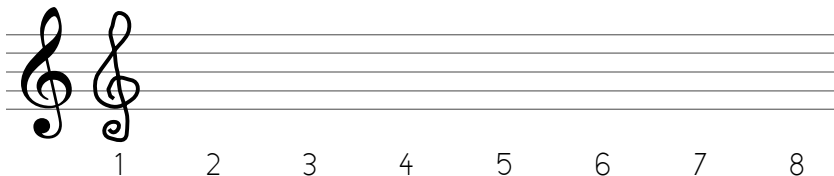
The **treble clef** is sometimes called the **G clef** because it curls around the G above middle C.



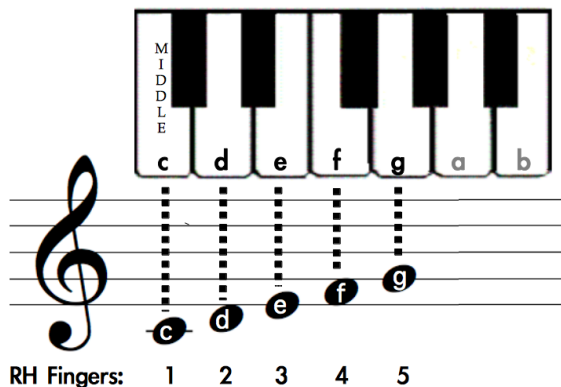
Trace each treble clef symbol. The first one is done for you.



Draw eight treble clefs on the staff to the right. The first one is done for you.



C position - right hand on the treble clef

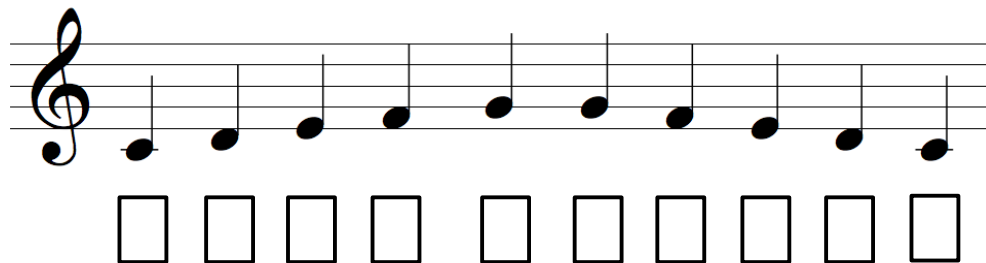


The chart on the left shows how the five notes of middle C position are written on the staff.

The lines and spaces on the treble staff are absolute - a note written on the bottom line is always e. A note written on the bottom space is always f.



Write the note names in the boxes under each note on the staff.





Line notes in right hand C position

There are three line notes in right hand C position - C, E and G.
Write the correct note names in the boxes underneath each note.

□ □ □ □ □ □ □ □ □ □ □ □ □ □ □



Space notes in right hand C position

There are two space notes in right hand C position - D and F.
Write the correct note names in the boxes underneath each note.

□ □ □ □ □ □ □ □ □ □ □ □ □ □ □



Treble Clef Mountain!

Write the correct note names in the boxes underneath each note.

□ □ □

□ □ □ □ □ □ □

□ □ □ □ □ □ □ □ □ □ □ □ □ □ □

□ □ □ □ □ □ □ □ □ □ □ □ □ □ □

--	--	--

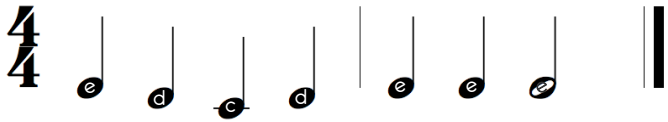
How to learn a piece:

- 1) Clap or tap the rhythm while counting out loud.
- 2) Say the note names while moving the correct fingers in the air.
- 3) Play through the piece several times:
 - At least once while counting the rhythm out loud.
 - At least once while saying the note names out loud
 - At least four times

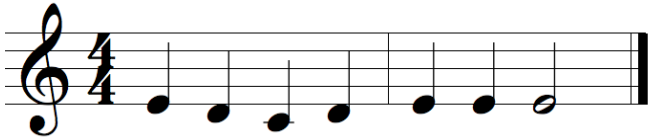
Reading music on the treble clef

Learning to play a piece on the *staff* is very similar to learning to play from *note name notation*. The only difference is that the names of the pitches are not written inside the noteheads; instead, notes are placed on a specific line or space on the *staff* to indicate their pitch.

Here are the first two measures of Mary Had a Little Lamb written in *note name notation*:



Here is the same music written on the treble clef:



The next set of pieces are all written on the *staff* using the *treble clef*. Each note is written a specific line or space. It is usually helpful to write the note names in when you are first learning to read music. You can use the chart on the right as a reference.

Remember: Each piece must be played with the correct rhythm, pitches and fingering!

Note names and fingers
Treble clef C position

RH Fingers: 1 2 3 4 5

17 Up the Stairs

notes	fingers	rhythm	teacher initials	date

18 Basketball Champs

Did you hear that our team won? We can dunk on a - ny-one!

5

Ev - 'ry time we get the ball, we're the best of all!



Write in the finger numbers for "Basketball Champs." Then write in the note names.

notes	fingers	rhythm	teacher initials	date

19 Ode to Joy (first half - right hand only)

Ludwig Van Beethoven

3 3 4 5 5 4 3 2 1 1 2 3 3 2 2

5

3 3 4 5 5 4 3 2 1 1 2 3 2 1 1



Write in the note names for "Basketball Champs."

notes	fingers	rhythm	teacher initials	date

20 If I Were a Marching Band

1 4 2 5

If I were a mar-ching band, I'd have flutes in - stead of hands.

5

1 4

Trum - pets where my nose should go, cla - ri - nets in - stead of toes.

notes	fingers	rhythm	teacher initials	date